

TWS
— NEXUS

Brand Overview

UNVEILING OUR JOURNEY

Looking for a team that brings your vision to life? You've found us! From **stunning graphics** to **game-changing social media strategies**, we do it all. Let us elevate your brand with :

- **Product Marketing** that sell
- **Branding** that tells your story
- **Content Creation** that engages
- **Digital Marketing** that drives results
- **Graphic Design** that grabs attention
- **Website Development** that stands out

- **6+ Years**
of Experience
- Worked with
10+ Industries
- **150+ Clients**
Served

OUR UNIQUE EDGE

**Where Every Client is a
Canvas & Every Solution is a
Masterpiece.**

We're the creative team,
Turning ideas into reality

Innovate, Create & Elevate
Our recipe for game changing
strategies

With us, you're not just
hiring a team; you're
Investing in partner
Dedicated to your Success.

WHAT WE DO ?

- CONTENT WRITING
- BRANDING SERVICE
- PRODUCT MARKETING
- WEBSITE DEVELOPMENT
- EXHIBITION STALL DESIGN
- GRAPHIC DESIGN SERVICE
- SOCIAL MEDIA MARKETING

WHOM WE CATER TO ?

- LAW FIRM
- JEWELLERS
- REAL ESTATE
- HEALTHCARE
- TOURS & TRAVELS
- EVENT MANAGEMENT
- FOOD AND BEVERAGES

Our Solution



Branding & Strategy

Whether you want to generate more leads or expand your organic reach, we have the expertise & experience to drive your success digitally.



Website Development

We combine modern design, minimal style, and practical features to create designs that look amazing and are visually stunning.



Content Writing

We're dedicated to telling your brand's story through compelling content. From engaging copy to persuasive messaging, we craft words that connect with your audience and inspire action.



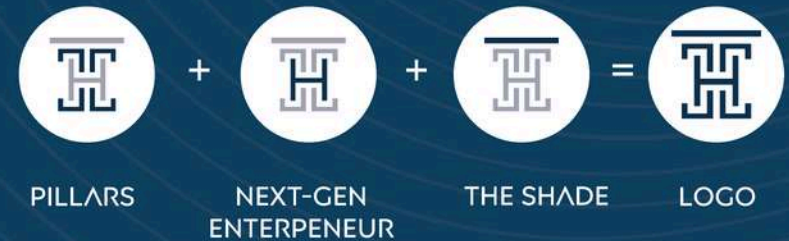
Marketing

Take your business to the next level with our cutting-edge methods. We push boundaries and deliver innovative solutions.

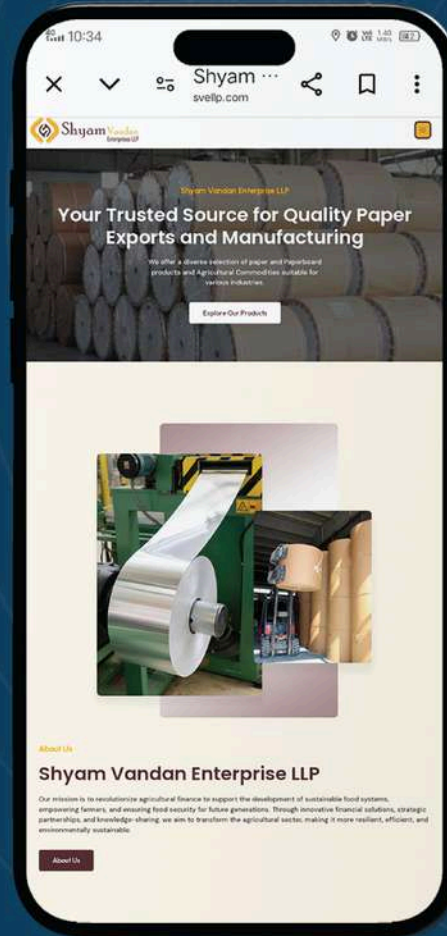
Branding Portfolio



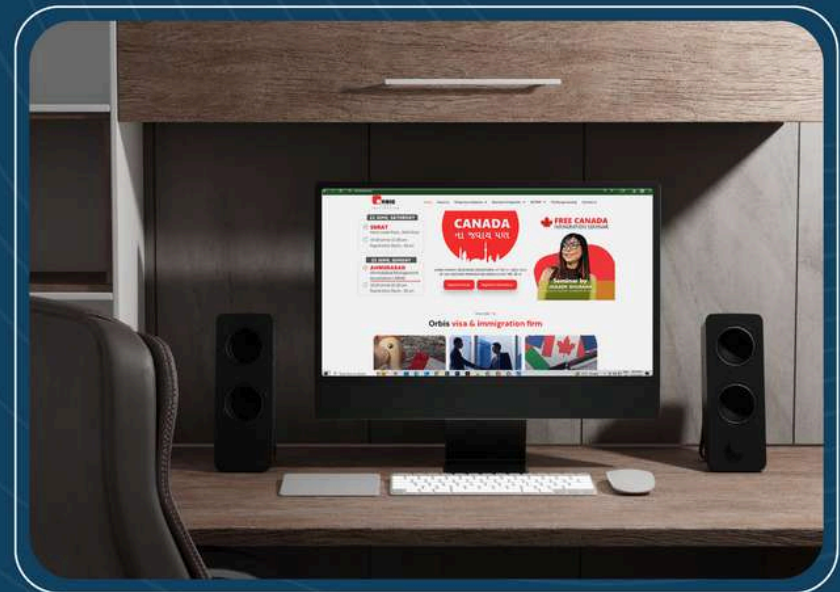
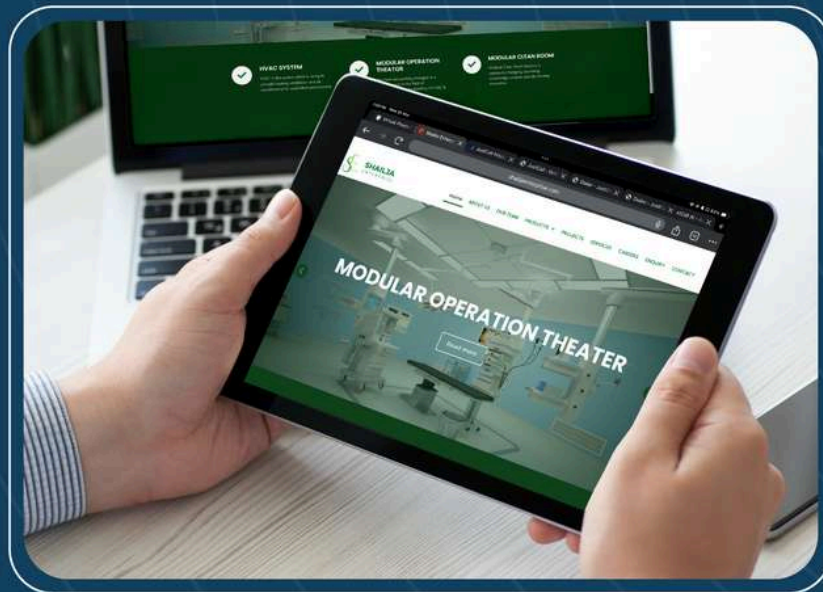
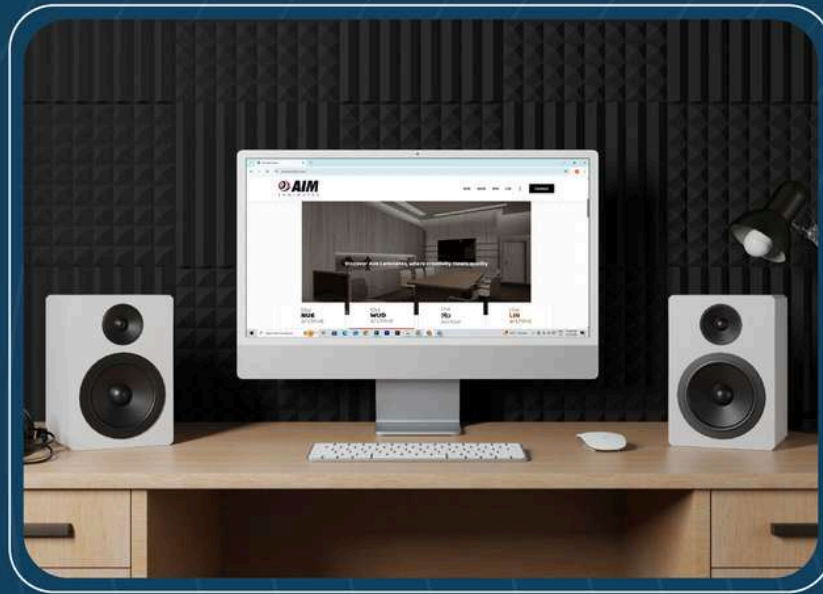
Branding Portfolio



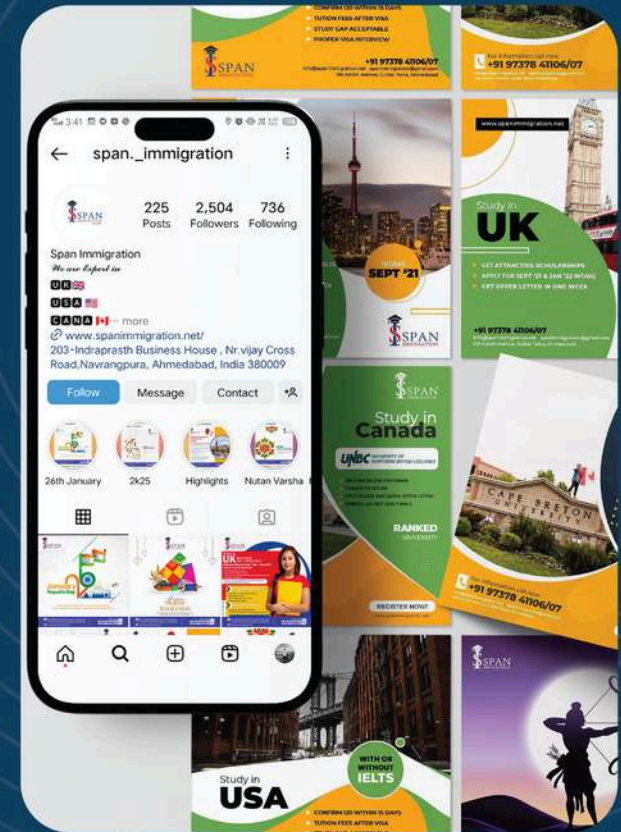
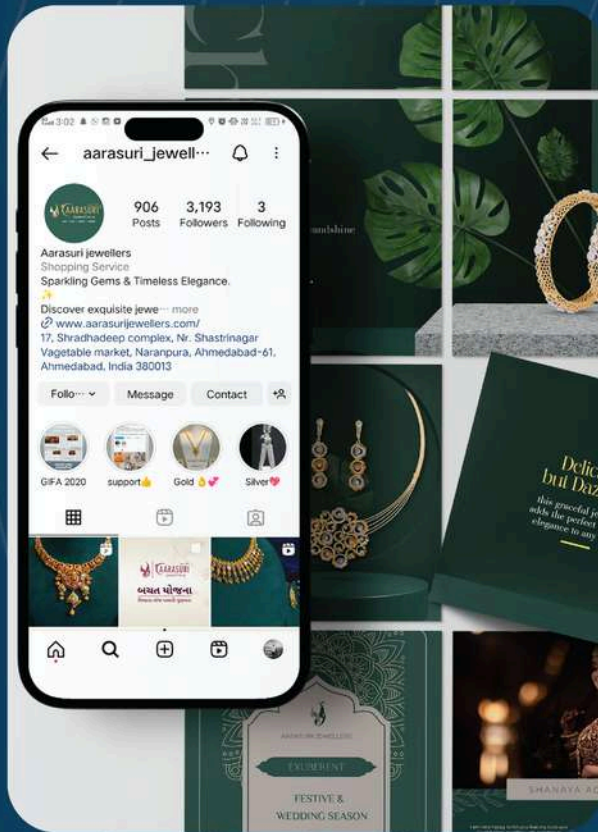
Web Development



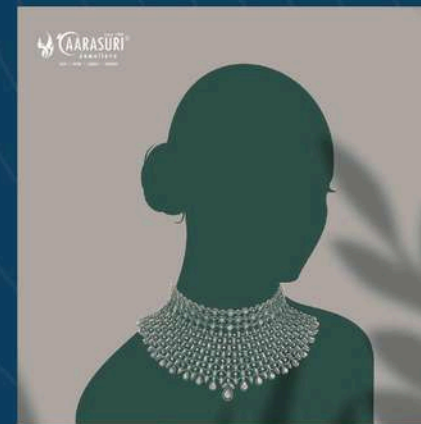
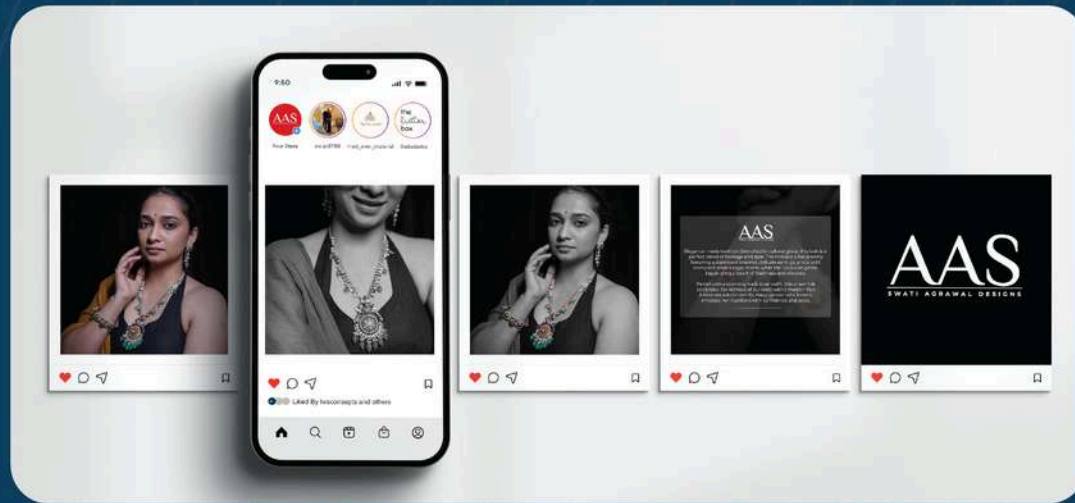
Web Development



Social Media Marketing



Social Media Marketing



Flyer Design

Designed for operator and environment safety. Engineered for performance.

EO sterilizers with varying capacities designed to fit every need, from small clinics to large CSSD installations.

Corresponding basket sizes allow processing of small to large instruments & loads. Each model includes (RH%) sensors, that monitor & control humidity during the pre-conditioning phase, allowing optimum moisture levels required for re-exposure phase.

The modern PLC (program logic controller) provides accurate control and pinpoint display of temperature and pressure throughout the process.

Standard Hot (55deg.C) and cold (40deg.C) cycle are automatically processed.

Additional Features:

- Every parameter like phase, time, temperature, pressure is continuously displayed on the screen, including errors and alarms which also get logged.
- Single 'unit-dose' ETO cartridge is punctured INSIDE the sealed chamber, only when it is in the conditioning phase for sterilization are achieved.
- Printers are provided for online printing of reports.



Sun Sterifaab
Private Limited

ETO STERILIZER

PROTECT YOUR PATIENTS,
PRESERVE YOUR INSTRUMENTS.



State of the art [SCADA] software is available to fulfil the need of pharma manufacturers.

data retrieval, and data retrieval through USB.

door or double door pass through systems

ers system for environmental and safety norms compliance.

decades of proven excellence in design, innovation & engineering.

standing model. Our versatile range of machines include table-tops for all the other model offers a two door pass through feature for clean room applications. Sterilisation in the same chamber, thus EO exposure potential is cut down drastically. Negative pressure utmost operator & environment safety. Specially designed and sealed cartridges Sun Sterifaab safely deliver 'unit-dose' EO for sterilisation efficacy and operator & safety.

ETO sterilizer. The extra-large chamber with a full sized lower basket and two half-baskets provides economical processing of large loads or larger surgical instruments. It features a sensing system that continuously monitors and controls relative humidity during the conditioning phase to optimize moisture required for the exposure cycle (two deg. C & 40deg. C). dependable computer controlled electronic design provides automatic stops the cycle and displays codes if an error is detected.

Dimensions in Ft.	Capacity Ltrs Approx	ECO	MICRO	MAX
12"(w) x 12"(h) x 12"(d)	28 Ltrs			
12"(w) x 12"(h) x 24"(d)	56 Ltrs	S1	S1/A	S1/C
12"(w) x 12"(h) x 30"(d)	71 Ltrs	S2	S2/A	S2/C
12"(w) x 12"(h) x 36"(d)	85 Ltrs	S3	S3/A	S3/C
12"(w) x 12"(h) x 42"(d)	127 Ltrs	S4	S4/A	S4/C
12"(w) x 12"(h) x 48"(d)	141 Ltrs	S5	S5/A	S5/C
12"(w) x 12"(h) x 54"(d)	177 Ltrs	S6	S6/A	S6/C
12"(w) x 12"(h) x 60"(d)	225 Ltrs	S7	S7/A	S7/C
12"(w) x 12"(h) x 66"(d)		S8	S8/A	S8/C
12"(w) x 12"(h) x 72"(d)		S9	S9/A	S9/C
12"(w) x 12"(h) x 78"(d)		S10	S10/A	S10/C

Our Clients



ALPINE
WOODS



CONVERSIOS



Sun Sterifaab
Private Limited



sherly
jewels

Let's Build Brand

www.twsnexus.com

Contact Details



+1 708 7299374



+91 98257 11772



business@twsnexus.com



7, opp. Trinity School, b/h post office,
Fatehpura Gam, New Flowerkunj Society,
Bhatta, Paldi, Ahmedabad, Gujarat 380007